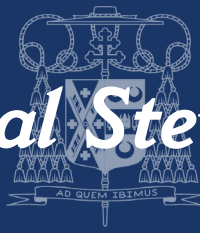


Cardinal's Annual Stewardship Appeal



When You Choose to Give, Lives Are Changed

Your decision to support the *Cardinal's Annual Stewardship Appeal* allows the Church to care for people beyond the walls of any one parish—serving communities, forming faith, and responding where need is greatest across New York.

2026 Appeal Goal: \$21 Million

The areas of support below show what happens when you choose to give.

Financial Assistance for Struggling Parishes – \$9M

You help keep parish life alive.

96 financially vulnerable parishes received support to remain open for Mass, the sacraments, and pastoral care.

Pastoral Administration, Grants, and Services – \$3.5M

You help faith grow and reach new people.

Ministries including Adult Discipleship and Marriage Formation, Youth Faith Formation, Cultural Diversity Apostolate, Respect Life, Sharing God's Gifts Pastoral Grants Programs, and The Good Newsroom™ reach thousands of individuals and families.

Catholic Education – \$3M

You help form the next generation.

153 Catholic schools and programs served more than 78,000 students through faith-centered education.

Retired Priests, Priestly Education, and Formation Programs – \$3M

You honor those who served—and prepare those who will.

300 retired priests received care with dignity.

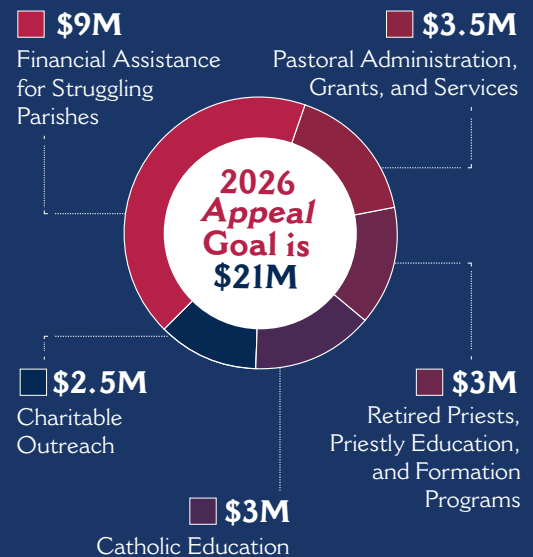
96 seminarians were formed for future ministry.

Charitable Outreach – \$2.5M

You stand with neighbors in moments of need.

600,000 individuals and families received food, shelter, counseling, and emergency assistance through Catholic Charities.

Areas of Support



Why Your Choice Matters

Giving to the *Cardinal's Annual Stewardship Appeal* is a personal decision—one that reflects your conviction that the Church must be present, responsive, and compassionate. Through your choice, faith is strengthened and hope reaches communities across New York

Learn more or take the next step when you are ready:
646-794-3300 | cardinals.appeal@archny.org | cardinalsappeal.org